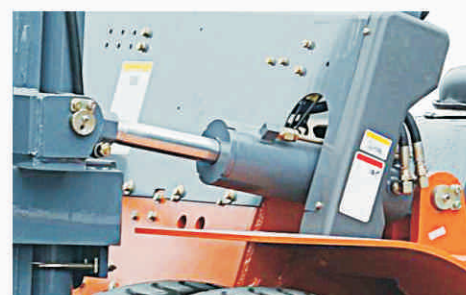


h2000
SERIES

A reliable hydraulic system

HELI has the most professional R&D base of cylinders, where we take advantage of the advanced manufacturing technologies and detecting means to ensure the reliability of all cylinders of the hydraulic system.

- ✓ Standard tilt cylinder by HELI
- ✓ Standard lift cylinder by HELI
- ✓ Standard steering cylinder by HELI
- ✓ Self-locking tilt cylinder
- ✓ Standard hydraulic circuit filter
- ✓ Speed buffer device on lifting system



A reliable steering system

The steering system with new technologies not only provides a smoother swerve and faster positioning & steering, but also effectively ensures operators' safety.



- ✓ Full hydraulic power steering
- ✓ Smaller turning radius
- ✓ Wearable tire

Comfortable operation space

Large operation space with ergonomic-design and configuration ensure the operation more comfortable & convenient, and effectively enhance the efficiency & safety of operation.

- ✓ Newly patented insulation materials of Bonnet
- ✓ Well-designed non-slip mat
- ✓ Special display with easily reading
- ✓ Standard files packet
- ✓ Standard distribution of overhead guide raincoat
- ✓ Filled with noise-reducing and buffer rubber material between bonnet and frameworks



HELI



h2000
SERIES
Reliable forklift

5-10 ton
ENGINE POWERED
FORKLIFT

STANDARD EQUIPMENT

Hour meter
Horn
Oil pressure alarm
Three-spool control valve
Power steering
Rubber pedal pad
Backrest
Back view mirror
Front combined lights
Transmission oil filter
Engine flameout device
Parking brake cable
Water temperature meter
Attached tools
Rear combined lights
Reversing buzzer
Self-locking tilt valve
Tilt adjustable steering column

Overhead guard
Standard forks
Neutral switch
Hydraulic circuit oil filter
Radiator tank
Speed-limiting valve
Oil meter
Battery-charge indicator
Wide-view mast
Intake device
Durable tire
Operating handles
Traction pin
Standard seat
Hydraulic oil gauge
Overhead guard raincoat
Torque converter oil gauge
Combined display

OPTIONS

Cab
Rotating warning light
Vertical exhaust
User-specified color
Optional attachments
Tilt cylinder sleeve
Steering cylinder sleeve
User-specified color
Optional attachments
Cab
Rotating warning light
Vertical exhaust
User-specified color
Optional attachments
Extended fork sleeve
Heater
Solid tire
Widening fork carriage
Windglass
Purifying muffler
Fire muffler
Fire extinguisher
Rear lights
Air conditioning (some models)
Electro-hydraulic switch
OPS driving control
Torque converter oil temperature meter

20 YEARS TOP1 FORKLIFT MANUFACTURING AND SALE
IN CHINA CONTINUOUSLY FOR 20 YEARS

ANHUI HELI CO., LTD.
ADDR 15 WEST WANGJIANG ROAD, HEFEI, ANHUI, P.R.CHINA
TEL (86 551)3639068,3639258,3639358
FAX (86 551)3639966
WEBSITE <http://www.helichina.com>

AUTHORIZED DEALER

* Details of specifications and equipment are based on information available at the time of printing and may change without notice.

© 2011 heli copyright

Catalog No.2011.01 HELI Print

5-10 ton
ENGINE POWERED
FORKLIFT



h2000 Reliable forklift

CHINESE EXPORT BRAND

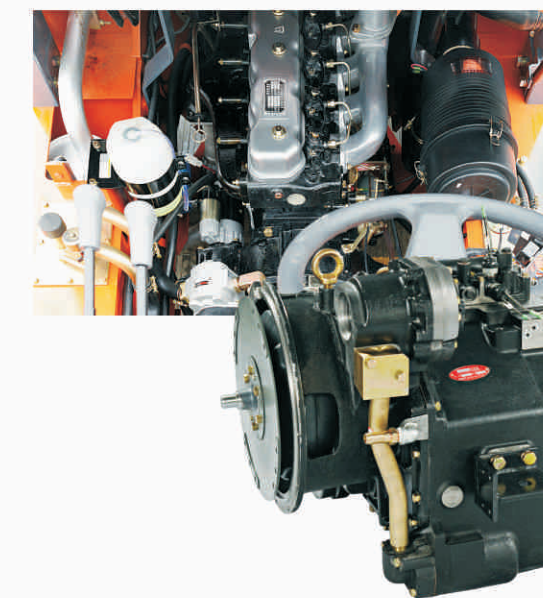
Recommended
By China Chamber of Commerce for Import and Export of Machinery
And Electric Products

ENGINE POWERED
FORKLIFT

5-10 ton

Reliable forklift

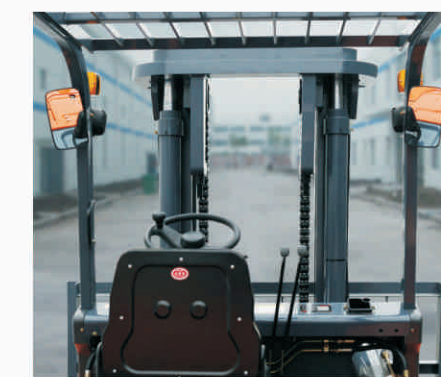
A reliable Drive system



As the most reliable transmission system produced by HELI, it has been validated by over twenty years' experience in the world market. Meanwhile, various ancillary devices of the power system ensure the reliability effectively.

- ✓ Durable transmission
- ✓ Equipped with the intake system
- ✓ Standard distribution of air filter pressure alarm device
- ✓ Automatic engine preheating system
- ✓ Cyclone Air Filter
- ✓ Lost foam casting
- ✓ Various high-power engines are available for customers' optional choices.

A reliable mast



The high internal-qualified mast confirmedly ensures the safety of the operator, truck and cargo. Standard configuration of the wide-view mast enlarges operators' view effectively, and ensures loading /unloading operations more

- ✓ Using the best German steel material for triplex mast
- ✓ The frame of mast has more strength basing on the enlarged channel interface.

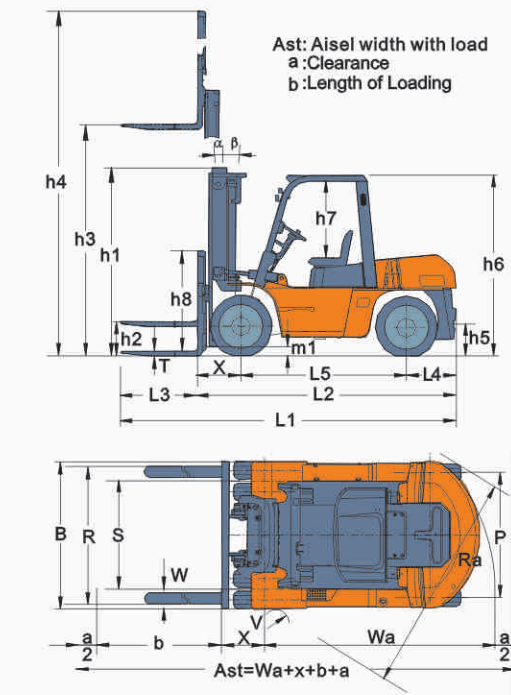
Manufacturers Data and Design Characteristics																		
Characteristics																		
1	Manufacturer	HELI																
2	Model	CPCD50	CPCD60	CPCD70	CPCD80	CPCD100	CPCD50	CPCD60	CPCD70	CPCD80	CPCD100	CPCD50	CPCD60	CPCD70				
3	Power unit	Diesel					Diesel					Diesel						
4	Rated Capacity	kg	5000	6000	7000	8000	10000	5000	6000	7000	8000	10000	5000	6000	7000			
5	Load Center	mm	600					600					600					
6	Operation	Driver Seated					Driver Seated					Driver Seated						
Dimensions																		
7	Overall max.lifting height (with backrest)	h4	mm	4360	4350	4345	4360	4085	4360	4350	4345	4360	4085	4360	4350			
8	Max.lifting height	h3	mm	3000														
9	Height mast retracted(upright)	h1	mm	2500	2500	2500	2700	2850	2500	2500	2700	2850	2500	2500	2500			
10	Free lift height	h2	mm	200														
11	Backrest height(from upper face of forks)	h8	mm	1360	1350	1345	1360	1015	1360	1350	1345	1360	1015	1360	1350			
12	Overhead Guard clearance(from face of seat)	h7	mm	1120														
13	Overall height(overhead guard)	h6	mm	2450	2450	2450	2560	2560	2450	2450	2560	2560	2450	2450	2450			
14	Overall length(with forks)	L1	mm	4660	4735	4800	5160	5480	4660	4735	4800	5160	5480	4660	4735			
15	Overall length(without forks)	L2	mm	3440	3515	3580	3940	4260	3440	3515	3580	3940	4260	3440	3515			
16	Front overhang	X	mm	590	590	590	700	718	590	590	590	700	718	590	590			
17	Rear overhang	L4	mm	600	675	740	740	740	600	675	740	740	600	675	740			
18	Wheel base	L5	mm	2250	2250	2250	2500	2800	2250	2250	2500	2800	2250	2250	2250			
19	Coupler height	h5	mm	430	430	430	540	540	430	430	430	540	430	430	430			
20	Min.ground clearance under mast	m1	mm	200	200	200	245	245	200	200	200	245	245	200	200			
21	Overall width	B	mm	1995	1995	1995	2165	2165	1995	1995	1995	2165	2165	1995	1995			
22	Lateral fork adjustment outside of fork(Max./Min.)	R	mm	1845/300	1845/300	1845/300	2000/340	2140/410	1845/300	1845/300	2000/340	2140/410	1700/300	1700/300	1700/300			
23	Tread(front)	S	mm	1470	1470	1470	1600	1600	1470	1470	1470	1600	1470	1470	1470			
24	Tread(rear)	P	mm	1700	1700	1700	1700	1700	1700	1700	1700	1700	1700	1700	1700			
25	Outside turning radius	Wa	mm	3250	3300	3370	3700	3900	3250	3300	3370	3700	3900	3250	3300			
26	Inside turning radius	V	mm	200	200	200	200	200	200	200	200	200	200	200	200			
27	Min.intersecting aisle	Ra	mm	2960	3000	3040	3310	3540	2960	3000	3040	3310	3540	2960	3000			
28	Tilting angles(forward/backward)	α/β		6° /12°					6° /12°					6° /12°				
29	Fork dimensions(axbxc)	mm	55×1220×150		60×1220×150		65×1220×150		70×1220×170		80×1220×175		55×1220×150		60×1220×150		65×1220×150	
Performance																		
30	Max. Traveling speeds(With/Without load)	km/h	26/28	26/28	26/28	26/30	26/30	26/28	26/28	26/28	26/30	26/30	26/30	26/30	26/30			
31	Lifting Speeds(With/Without load)	mm/s	520/550	520/550	510/540	440/470	360/380	530/550	530/550	510/540	400/440	330/370	450/470	440/470	420/460			
32	Lowering Speeds(With/Without load)	mm/s	≤600/≥300															
33	Max. Draw-bar pull,With load	kN	62	62	62	60	58	60	60	60	59	57	42	40	40			
34	Max. Negotiable Gradient(With/Without load)	%	35/19	32/19	30/19	27/20	22/20	34/19	31/19	29/19	25/20	21/20	23/19	20/19	20/19			
Weights																		
35	Service Mass	kg	7980	8640	9350	10960	12510	7980	8640	9350	10960	12510	7980	8640	9350			
36	Load Wheel with load(Front/Rear)	kg	11660/1320	13050/1590	14570/1780	17000/1960	20380/2130	11660/1320	13050/1590	14570/1780	17000/1960	20380/2130	11660/1320	13050/1590	14570/1780			
37	Load Wheel without load(Front/Rear)	kg	4010/3970	3880/4760	3860/5490	4840/6120	5700/6810	4010/3970	3880/4760	3860/5490	4840/6120	5700/6810	4010/3970	3880/4760	3860/5490			
Tyres																		
38	Wheels number front/rear(x=driven)	4x/2					4x/2					4x/2						
39	Tyre Type	PNEUMATIC TYRE					PNEUMATIC TYRE					PNEUMATIC TYRE						
40	Tyre size(front)	8.25-15-14PR					9.00-20-14PR					8.25-15-14PR						
41	Tyre size(rear)	8.25-15-14PR					9.00-20-14PR					8.25-15-14PR						
42	Service Brake	Hydraulic-Foot Pedal					Hydraulic-Foot Pedal					Hydraulic-Foot Pedal						
43	Parking Brake	MECHANICAL-HAND BRAKE ROD					MECHANICAL-HAND BRAKE ROD					MECHANICAL-HAND BRAKE ROD						
Drive																		
44	Battery (Voltage/Capacity)	V/Ah	2x12/80					2x12/80					2x12/80					
45	Internal Combustion Engine Model		Cummins QSB4.5					Perkins 1104D-44TA					MITSUBISHI S6S-T					
46	Engine type		Electronic controlling, Turbocharged,Air-to-air intercooled diesel engine					Turbocharged,Air-to-air intercooled diesel engine					Turbocharged diesel engine					
47	Internal Combustion Engine Rated Output	kW/rpm	82/2200					83/2200					63.9/2300					
48	Internal Combustion Engine Rated Torque	Nm/rpm	488/1500					418/1400					285/1700					
49	Internal Combustion Engine Number of Cylinder		4					4					6					
50	Internal Combustion Engine Displacement	L	4.5					4.4					4.996					
51	Internal Combustion Engine Fuel Tank Capacity	L	140					140					140					
52	Transmission type		Power Shift					Power Shift					Power Shift					
53	Transmission Number of Speed Fwd/Bwd		2/2	2/2	2/2	2/2	2/2	2/2	2/2	2/2	2/2	2/2	2/2	2/2	2/2			

8-10t WIDE VIEW MAST									
Mast model	Max. Fork Height (mm)	Load Capacity (kg)		Overall Mast Height (At Lowered) (mm)		Service Weight (kg)		Tilting Angle (deg.)	
		CPCD80	CPCD100	CPCD80	CPCD100	CPCD80	CPCD100		
M250	2500	8000	-	2450	-	10870	-	6-12	
M270	2700	8000	-	2550	-	10920	-	6-12	
M300	3000	8000	10000	2700	2850	10960	12150	6-12	
M330	3300	8000	10000	2850	3000	11020	12215	6-12	
M350	3500	8000	10000	2950	3100	11060	12260	6-12	
M375	3750	8000	10000	3075	3225	11100	12310	6-12	
M400	4000	8000	10000	3250	3400	11310	12450	6-12	
M425	4250	8000	10000	3375	3525	11360	12510	6-12	
M450	4500	8000	10000	3500	3650	11400	12560	6-12	
M475	4750	7750	10000	3625	3775	11450	12620	6-6	
M500	5000	7750	10000	3750	3900	11500	12670	6-6	
M550	5500	7400	9000	4050	4200	11740	12910	3-6	
M600	6000	7000	8000	4300	4450	11830	13020	3-6	

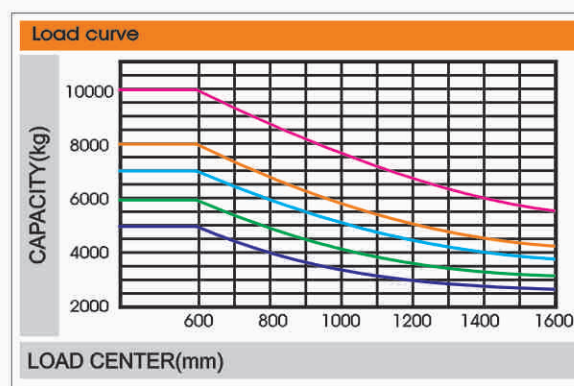
8-10t WIDE VIEW FULL FREE 3-STAGE MAST										
Mast model	Max. Fork Height (mm)	Load Capacity (kg)		Overall Mast Height (At Lowered) (mm)		Service Weight (kg)		Free lift with Backrest (mm)		Tilting Angle Fwd/Bwd (deg.)
		CPCD80	CPCD100	CPCD80	CPCD100	CPCD80	CPCD100	CPCD80	CPCD100	
ZSM360	3600	3600	8000	11350	2570	12580	1092	1310	6-12	
ZSM400	4000	7000	8000	2575	2700	11420	12640	1217	1440	6-12
ZSM435	4350	7000	8000	2700	2820	11490	12700	1342	1560	6-12
ZSM480	4800	7000	7500	2850	2970	11570	12760	1492	1710	6-6
ZSM500	5000	7000	7500	2950	3035	11640	12810	1592	1775	6-6
ZSM540	5400	6600	7000	3075	3225	11710	12880	1717	1965	3-6
ZSM600	6000	6000	6000	3375	3425	12050	12960	2017	2165	3-6
ZSM650	6500	5500	5600	3600	3595	12150	13250	2242	2335	3-6
ZSM700	7000	4500	-	3750	-	12240	-	2392	-	3-6

NOTE: 8-FREE LIFTING HEIGHT WITHOUT LIFT-BRACKET +213mm(10t without backrest)

SIDE SHIFTER ON 10T FREE LIFTING MAST						
Mast model	Max. Fork Height (mm)	Load Capacity (kg)	Overall Mast Height (At Lowered) (mm)	Tilting Angle Fwd/Bwd (deg.)	Service Weight (kg)	
ZSM360	3600	8000	2570	6-12	12580	
ZSM400	4000	8000	2700	6-12	12640	
ZSM435	4350	8000	2820	6-12	12700	
ZSM480	4800	7500	2970	6-6	12760	
ZSM500	5000	7500	3035	6-6	12810	
ZSM540	5400	7000	3225	3-6	12880	
ZSM600	6000	6000	3425	3-6	12960	



CPCD50 CPCD60 CPCD70 CPCD80 CPCD100



Note: Capacities shown are computed with upright in vertical position, based on a 1000 mm cube load configuration with the center of gravity at the true center of the cube, and standard forks. Truck capacities with upright in forward tilt position will be less. Long forks, and unusually wide or loads may also reduce capacity.

5-7t WIDE VIEW MAST											
Mast model	Max. Fork Height (mm)	Load Capacity (kg)			Overall Mast Height (At Lowered) (mm)			Service Weight (kg)			Tilting Angle (deg.)
		CPCD50	CPCD60	CPCD70	CPCD50	CPCD60	CPCD70	CPCD50	CPCD60	CPCD70	
M200	2000	5000	6000	7000	2000	2000	2000	7836	8496	9206	6-12
M250	2500	5000	6000	7000	2250	2250	2250	7900	8560	9270	6-12
M270	2700	5000	6000	7000	2350	2350	2350	7930	8590	9300	6-12
M300	3000	5000	6000	7000	2500	2500	2500	7980	8640	9350	6-12
M330	3300	5000	6000	7000	2650	2650	2650	8030	8690	9400	6-12
M350	3500	5000	6000	7000	2750	2750	2750	8060	8720	9440	6-12
M375	3750	5000	6000	7000	2875	2875	2875	8100	8760	9480	6-12
M400	4000	5000	6000	7000	3050	3050	3050	8270	8930	9650	6-12
M425	4250	5000	6000	7000	3175	3175	3175	8310	8970	9690	6-12
M450	4500	5000	6000	7000	3300	3300	3300	8350	9010	9730	6-12
M475	4750	5000	6000	7000	3425	3425	3425	8390	9050	9770	6-6
M500	5000	5000	6000	7000	3550	3550	3550	8430	9090	9810	6-6
M550	5500	4750	5700	6600	3850	3850	3850	8630	9290	10000	3-6
M600	6000	4400	5400	6400	4100	4100	4100	8710	9370	10080	3-6</